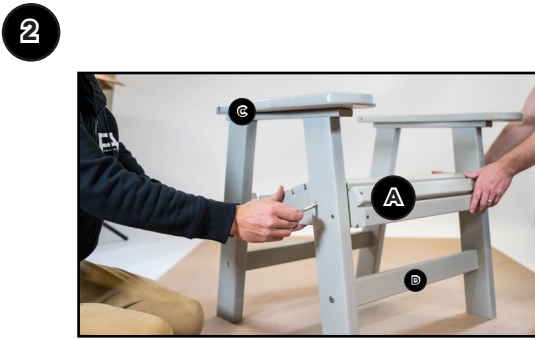


AC07

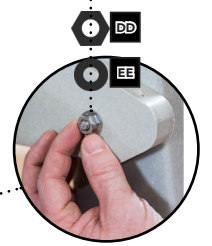
CLASSIC EASY CHAIR // ASSEMBLY INSTRUCTIONS



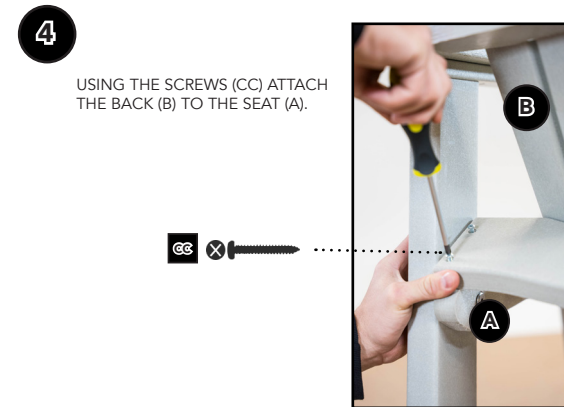
PLACE BOTH CROSS BEAMS (D) IN DESIGNATED GROOVES ON SIDE ARMS (C) AND PLACE HEX BOLT (AA). TIGHTEN WITH HEX KEY.



GRAB A BUDDY AND PLACE SEAT (A) BETWEEN BOTH ARM RESTS (C), PLACING 3" HEX BOLTS (BB) IN EACH HOLE - 3 HOLES EACH SIDE FOR A TOTAL OF 6.



ON THE INSIDE OF EACH BB BOLT, PLACE A WASHER (EE) AND A NUT (DD). TIGHTEN WITH WRENCH AND HEX KEY.



USING THE SCREWS (CC) ATTACH THE BACK (B) TO THE SEAT (A).

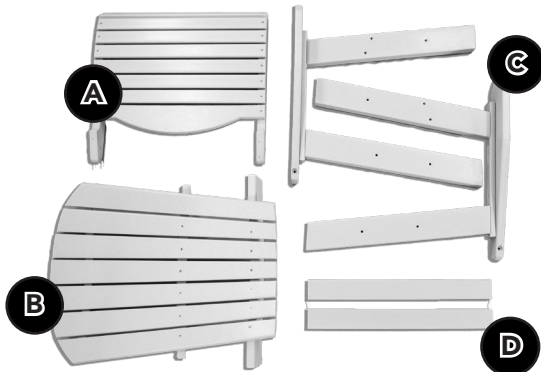


TAKE LAST TWO BOLTS (BB) AND CONNECT THE BACK END OF EACH ARM TO THE BACK OF THE CHAIR.

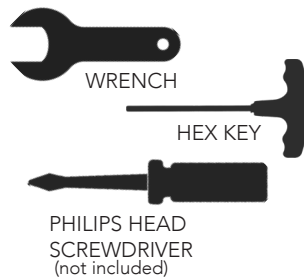


TA-DA! YOU'RE DONE. NOW IT'S TIME TO RELAX AND SIT DOWN.

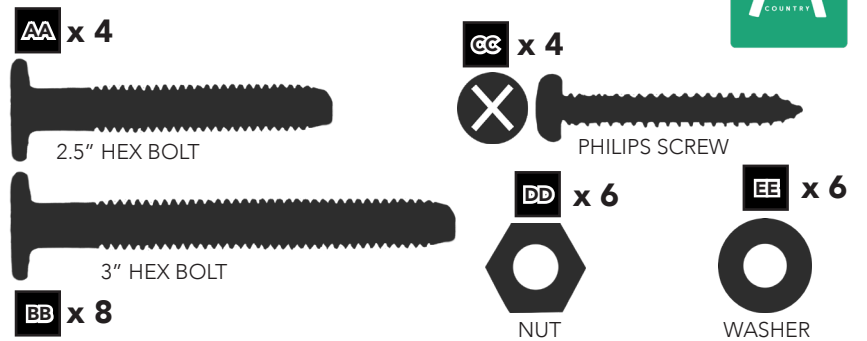
PARTS



TOOLS



HARDWARE



AMISH COUNTRY ASSEMBLY INSTRUCTIONS



**CLASSIC EASY CHAIR
AC07**

THANK YOU *Thank you for choosing Amish Country Poly. We are confident you'll love this beautiful piece of craftsmanship, and that you'll continue to choose Amish Country for all of your outdoor furniture needs and wants.*

For cleaning and maintenance tips, as well as Frequently Asked Questions about our furniture, visit:

[amishcountry.com](https://www.amishcountry.com)



FOLLOW US ON:



@amishcountrypoly